

QUELCAST CE MARKED CAST IN FIRE COLLAR

QuelCast CE Marked Cast In Fire Collars prevent the spread of fire through plastic pipe and cable penetrations in concrete floors.



QuelCast CE Marked Cast In Fire Collar



QuelCast CE Marked Cast In Fire Collar Installed in concrete floor

FEATURES & BENEFITS

- Up to 4 hour fire rating (EI240)
- Suitable for PVC, PVC-U, PE, HDPE, MDPE & PP pipes
- Available to suit 50mm, 110mm & 160mm pipes
- Performance unaffected by weathering (Type X Durability)
- Quick & simple installation
- Integrated smoke seal
- Strong lid to carry foot traffic and light access equipment
- No backfilling generally required
- Compact footprint allows for closer positioning of pipes
- Suitable for 150mm or thicker concrete slabs

STANDARDS & APPROVALS

- Fire resistance testing to BS EN 1366-3:2009
- CE Marked
- EI60, EI120, EI180, EI240
- Classified to EN 13501-2: 2007 + A1: 2009



The Warringtonfire Logo displayed is the trademark of Warringtonfire registered in the United Kingdom. The Warringtonfire Logo is evidence that the products denoted as 'Tested by Warringtonfire' were tested to BSEN 1366-3: 2009 in England between September 22nd 2015 and January 7th 2021



This product is CE Marked.

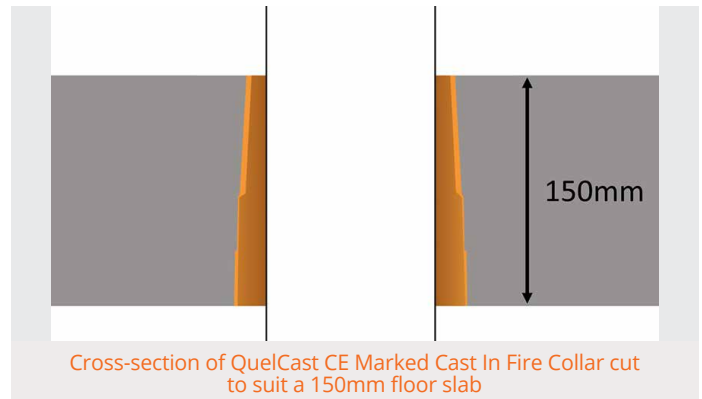
COMPOSITION

QuelCast CE Marked Fire Collars are constructed from a robust polypropylene material and contain a high performance intumescent material which reacts under the influence of heat. This will exert pressure on the pipe as it softens, to form a carbonaceous char which provides an effective insulation plug thus preventing smoke and fire passing through to the adjoining compartment.

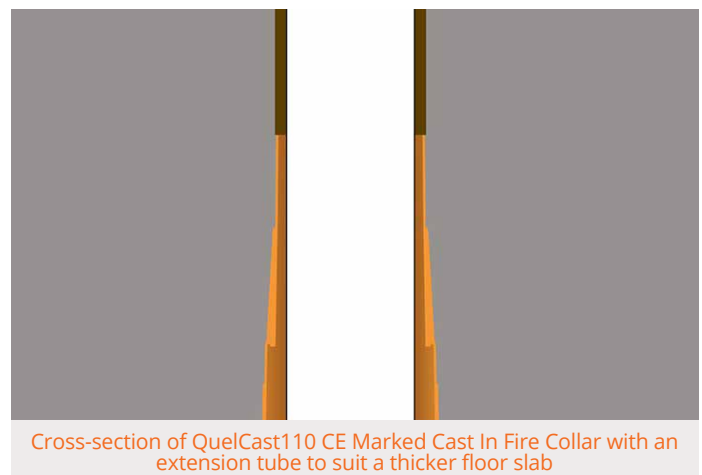
APPLICATION

The standard QuelCast is 250mm high to suit a 250mm deep concrete slab but they can be reduced or extended to suit differing slab depths – this is a service that Quelfire offer in house so that the product is delivered to site ready to install, however it can be done on site too.

For instances where the slab depth is between 250 and 150mm, the process is: Remove the cap, Cut the top off with a saw, replace the cap and finally, we recommend sealing the cap with self-adhesive tape to ensure no concrete seepage.



For instances where the slab depth is greater than 250mm the QuelCast is fitted with an extension tube. To install these the process is: Remove the cap, insert the tube over the QuelCast body pushing down until fully seated, measure up from the base, cut the extension tube with a sharp saw or knife, replace the cap and finally, we recommend sealing the cap with self-adhesive tape to ensure no seepage.



Simple installation steps:

1. Mark the formwork with a cross where the pipe is to pass through the floor
2. Position the QuelCast CE Marked Cast In Fire Collar as required (the centre line marks on the QuelCast Collars and Manifold help to position in the correct location)
3. Attach to the formwork using screws or nails through the holes in the 4 corners of the unit
4. Pour the concrete to the required depth
5. On completion of concrete curing, remove all formwork and shuttering
6. Remove the cap from the top of the QuelCast Collar
7. Place the pipe through the QuelCast Collar

Additional instructions for QuelCast50:

No extra work, backfill or sealant is required where the correct diameter pipe is used in the correct QuelCast. For QuelCast50, cable bunches and where smaller diameter pipes are used inside larger collars a mineral wool smoke seal backfill is required in the top of the QuelCast.

For 110mm diameter pipes inside a QuelCast110 and 160mm in a QuelCast160, no backfill is required.

For more in depth installation information request the QuelCast Installation guide from the Technical team –

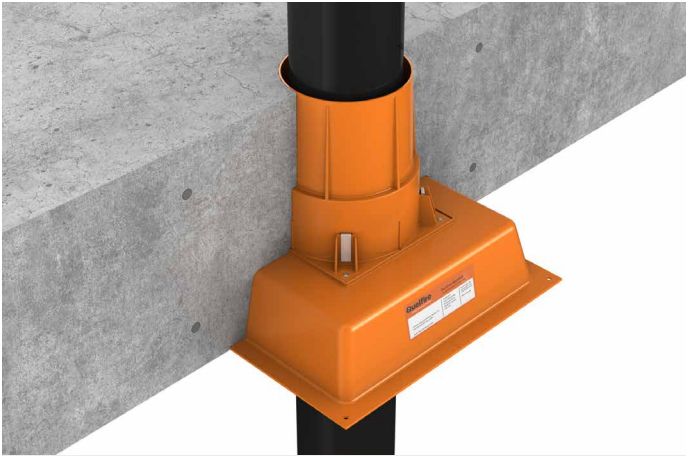
technical@quelfire.co.uk

QuelCast Manifold Recess Former

The QuelCast Manifold has been designed and developed to create a 70 mm recess in the floor slab either on the top or on the bottom of the floor slab to allow for applications where there is limited ceiling space and so the plastic pipe can be installed closer to the ceiling with the pipe connection recessed in the slab.

For example:

- 🔧 Shower traps for walk-in showers and wet rooms
- 🔧 Soil pipe manifolds
- 🔧 Pipe connections
- 🔧 Limited ceiling space

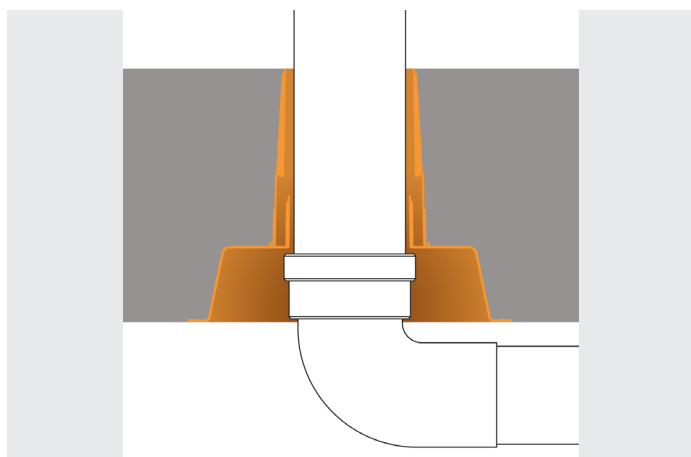


QuelCast Cast CE Marked Cast In Fire Collar installed with a manifold on the bottom



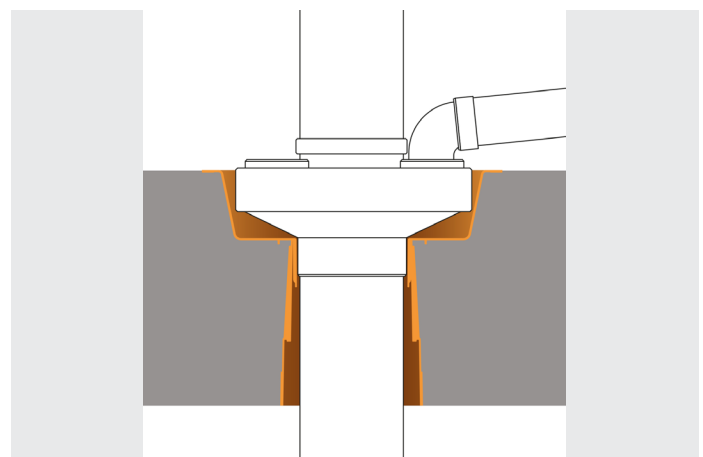
QuelCast CE Marked Cast In Fire Collar with a manifold on the top

When installing a QuelCast Manifold Recess Former to the underside of the slab the process is: cut the spigot off the manifold, position the QuelCast on the manifold within the indentations, secure together using self tapping screws through each corner of the QuelCast body and then install as a whole unit using the centre line indicators on the Manifold Recess Former as a guide instead of the QuelCast.



Cross-section of QuelCast CE Marked Cast In Fire Collar installed with a manifold on the bottom

When installing a QuelCast Manifold Recess Former on the top of the slab, the process is: remove the cap, cut/extend the QuelCast body to suit the slab depth taking into consideration the depth of the Manifold Recess Former, push the Manifold onto the QuelCast until fully seated, ensure the temporary shuttering infill is in place and sealed with tape and then install the whole unit as normal.



Cross-section of QuelCast CE Marked Cast In Fire Collar installed with a manifold on the top

PERFORMANCE

Product Code	Description	To suit	Qty. Per Box	Fire Rating
QUELCAST50	QuelCast50 Cast In Fire Collar to suit 50mm pipes	50mm dia. pipe	8	Up to 4 Hours
QUELCAST110	QuelCast110 Cast In Fire Collar to suit 110mm pipes	110mm dia. pipe	8	Up to 4 Hours
QUELCAST160	QuelCast160 Cast In Fire Collar to suit 160mm pipes	160mm dia. pipe	4	Up to 4 Hours
QUELCAST-MANIFOLD	QuelCast Manifold Recess Former	QUELCAST110	4	n/a

Technical Support & Guidance:

Should you require any further information regarding this product, please do not hesitate to contact the technical department at Quelfire Ltd.

Tel: **0161 928 7308**. Email: technical@quelfire.co.uk

Please be aware that this document is intended for general information only and all details should be checked against all relevant supporting test evidence, certification and installation guidelines. Use of alternative components or deviations from the instructions in any way is likely to mean that the installation will not comply with the assessed rating.

Quelfire Ltd does not accept responsibility for the consequences of using Quelfire products in applications or for purposes not authorised by Quelfire Ltd. Expert advice should be sought where such applications are contemplated.

The policy of Quelfire Ltd is one of constant improvement. Installers should therefore ensure they are working from the latest published drawings and instructions. Whilst Quelfire will endeavour to keep its publications up to date, the accuracy of the information contained within this drawing may be affected by pertinent changes in the law or regulatory requirements and alterations or amendments to the specification of Quelfire products.

All information contained in this document is given in good faith and is provided for guidance only. Any drawings provided are for illustrative purposes only. As Quelfire Ltd has no control over the methods or competence of installation and of prevailing site conditions, no warranties, expressed or implied, is intended to be given as to the actual performance of the product mentioned or referred to herein and no liability whatsoever will be accepted for any loss, damage or injury arising from the use of the information given.